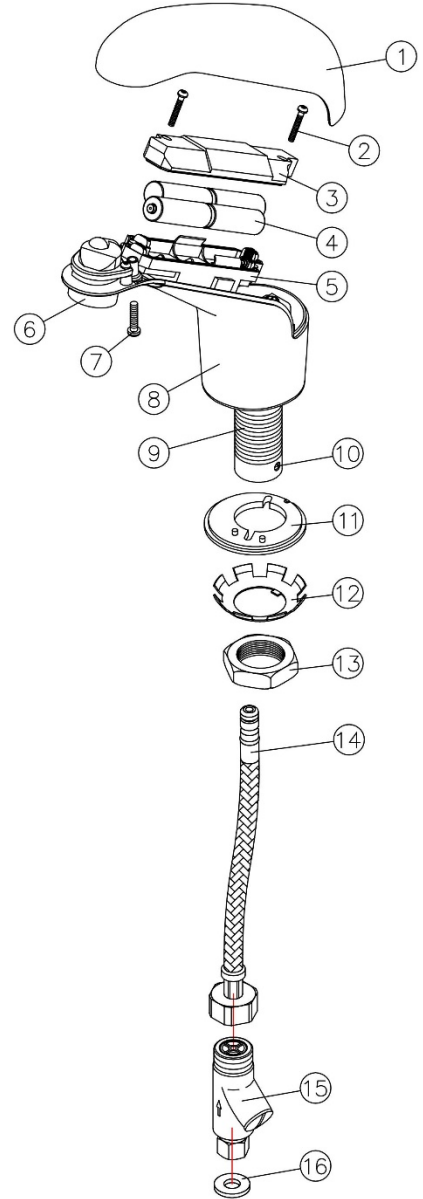


INSTALLATION INSTRUCTIONS

Hydrotek Model HB/HE-5000ELR – Non-Mixing Faucet Battery Powered

1. Prior to installing this faucet, thoroughly flush all water lines and replace stop washers as may be required.
2. Rotate the Supply Tube Locking Screw (10) fully clockwise. Insert Supply Tube (14) end (with o-rings) fully into the bottom of the Mounting Rod (9) by twisting / pushing until properly seated. **DO NOT USE PIPE DOPE, USE TEFLON TAPE.** Turn the Locking Screw (10) counter-clockwise until the markings on the Mounting Rod and the Screw are properly lined up.
3. Install in-line Filters (15) onto stop valves using nylon washer (16).
4. Unscrew Mounting Nut (13) from Mounting Rod (9) and completely remove both Mounting Nut (13) and Star Locking Washer (12).
5. From above the deck, carefully feed the Supply Tubes (14) and Mounting Rod (9) into deck mounting hole and seat faucet in correct mounting location.
6. From below the deck, insert the Supply Tubes (14) into the keyed Star Locking Washer (12) then Mounting Nut (13). Slide Locking Washer and Mounting Nut up onto Mounting Rod (9) and tighten Mounting Nut on Mounting Rod to securely lock faucet to the deck.
7. Connect Supply Tube (14) to the in-Line Filters compression fittings (15) and securely tighten.
8. **INSTALL BATTERIES** and tighten the cover with Battery Holder Screws (2). You should hear a clicking sound. Dry Test the faucet by placing hands under the spout and you will hear another clicking sound. If not, double check the battery connections and positioning.
9. Turn water on and check for leaks.
10. Place your hands under the faucet spout, water should start to flow. Remove your hands, water should stop. If the faucet is not functioning properly, **RE-INSERT BATTERIES** and let the faucet “ **RESET** ” by itself.
11. **IMPORTANT:** The stop valve should never be opened to the point where the water flow exceeds the flow capability of the fixture. The fixture must always be able to accommodate the continuous water flow from the valve in the event of a valve failure. Should the fixture overflow happen due to water exceeding the capability of the fixture & or the drain pipe, Hydrotek will not be responsible for any flood damages.
12. **IMPORTANT:** This product contains mechanical and/or electrical components that are subject to normal wear. these components should be checked regularly (1 year is recommended) and replaced as needed to maintain the Faucets performance. Call 1-800-922-9883 for further details.
13. **IMPORTANT:** DO NOT use abrasives, acids or cleaning fluids to clean the Hydrotek Faucet as they may dull the luster and attack the chrome or special finishes. use only soap and water then wipe with a clean cloth or towel.



Part No. Description	Part No. Description
1. Top Cover	9. Mounting Rod
2. Battery Holder Screws (2)	10. Locking Screw, Supply Tube
3. Battery Holder Cover	11. Gasket, Rubber
4. Batteries, AA Alkaline (4)	12. Star Locking Washer
5. Battery Holder	13. Mounting Nut
6. Aerator	14. Supply Tube
7. V.R. Screw, Top Cover	15. In-line Filter
8. Body	16. Nylon Washer

HYDROTEK INTERNATIONAL, INC.
 5055 Forsyth Commerce Road, Suite#124
 Orlando, FL 32807
 1-800-922-9883
 866-670-5580(Fax)

0093H104-1

HYDROTEK AUTOMATIC FAUCETS TROUBLE SHOOTING GUIDE

Model H/HB/HE-5000ELR and H/HB/HE-5000EMLR

AC Powered and Battery Operated

NORMAL OPERATION: When new batteries are inserted, or electricity is connected, the faucet will immediately perform a self adjusting and diagnostic function so that **please don't interfere the sensor eye for 20 seconds** then you will hear a clicking sound and see light flashes. **Please flush the line thoroughly before water line is being coonected to the faucet.** Place your hands under the spout, the light will flash once and water starts to flow. Water flow stops when hands are removed. Red indicator light flashes when batteries are low. For a mixing model, turn manual handle clock-wise to increase temperature; counter-clockwise to decrease. Pull Handle to turn on faucet, push to turn off manually.

PROBLEM	POSSIBLE CAUSE	TO DIAGNOSE	REMEDY
Faucet Will Not Turn On	Water not on.	Check water supply.	Turn on water supply
	Power failure.	No light, no click: Check batteries. Check power adapter.	Re-install or replace batteries. Replace power adapter
	Low battery	Light continues to flash.	Replace batteries.
	PCB/Sensor Is defective.	No light, no click: Re-insert batteries or Re-attach power adapter.	Call Hydrotek at 1-800-922-9883.
	Solenoid Valve Is clogged.	Solenoid is clicking but no water.	Call Hydrotek at 1-800-922-9883.
	In-line Filter is Clogged	Open clean-out trap and check filter.	Clean or replace filter.
	Solenoid Coil is Defective	Insert new batteries or re-attach power adapter, Light blinks, but no clicking.	Call Hydrotek at 1-800-922-9883
Flow Control is Clogged.	Open flow control device and check.	Clean the flow control device.	
Faucet Will Not Shut Off, Low Flow, Drips.	<p>Make sure the side Handle is pushed all the way in to deactivate the manual override mode. If faucet has a low flow or is dripping, clean solenoid valve. For the brand new installation call Hydrotek at 1-800-922-9883.</p> <p>IMPORTANT: Periodic maintenance is required for a smooth and trouble free operation of the faucet. For service and inquiry about available repair kits, call Hydrotek at 1-800-922-9883.</p>		