



**Sensor Faucets and Flush Valves**



**OPERATION & MAINTENANCE MANUAL**  
**6000C Series Faucet**

[www.hydrotekintl.com](http://www.hydrotekintl.com)

5055 Forsyth Commerce Rd, Ste 124, Orlando, FL 32807  
Phone (800) 922-9883 | Fax (866) 670-5580



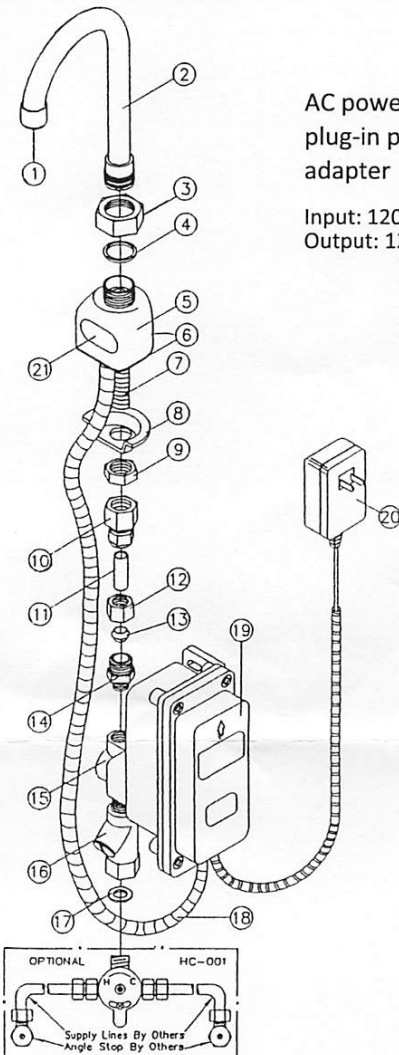
## Sensor Faucets and Flush Valves

# 6000C Series

Sensor Operated Faucet

## Installation Instructions

1. Prior to installation, thoroughly flush all water lines and replace stop washers, if required.
2. To ensure proper operation, "DRY TEST" the faucet by plugging the **Sensor Eye Cable (18)** into the matching connector on the PC board inside of the **Control Box (19)**.
  - a. **AC Powered:** Connect the **Power Adapter (20)** to the PC board inside of the **Control Box (19)**, then plug the Power Adapter into a 120 V AC wall outlet. Place your hand in front of the sensor eye and listen for a clicking sound. If there is no clicking sound, call the factory.
  - b. **Battery Powered:** Properly install new batteries into the battery holder and ensure the battery holder is connected to the PC board. Place your hand in front of the sensor eye and listen for a clicking sound. If there is no clicking sound, call the factory.
3. After a successful "DRY TEST", unplug the **Sensor Eye Cable (18)** and **Power Adapter (20)** or battery holder from the PC board.
4. Loosen **Flow Control Device (1)** and assemble the **Gooseneck Spout (2)** using the **Split Washers (4)** and **Spout Nut (3)**. Mount the **Gooseneck Spout (2)** onto the **Body (5)**. Feed the **Sensor Eye Cable (18)** through the sink wall and tighten the faucet onto the sink using the **Washer (8)**, and **Mounting Nut (9)**. Attach the **Compression Adapter (10)** and **Supply Tube (11)** to the **Supply Rod (7)**.  
**USE TEFLON TAPE ONLY, NO PIPE DOPE**
5. Reconnect the **Sensor Eye Cable (18)** and **Power Adapter (20)** connections described in STEP #2, making sure the cables are seating in the **Control Box (19)** housing properly.
6. Attach the **Compression Fitting (14)** to the **Solenoid Valve (15)** and connect it to the **Supply Tube (11)** using the **Compression Nut (12)** and **Ferrule (13)**. Insert the **Nylon Washer (17)** into the swivel nut located on the **In-Line Filter (16)**.
  - a. **Pre-tempered or cold water only:** Use a union fitting (not supplied) to connect the supply line (not supplied) from the supply stop to the **In-Line Filter (16)**.
  - b. **Tempered water:** Attach an optional Hydrotek **HC-001** or **HC-003** mixing valve to the **In-Line Filter (16)**. Connect the supply lines (not supplied) to the mixing valve.
7. Turn on water and check for leaks. Plug the **Power Adapter (20)** into a 120V AC outlet (for AC Powered). Push the reset button on the PC Board. Reinstall the cover for the **Control Box (19)** and tighten screws to ensure water resistance. Place hands in front of the sensor eye to activate water flow. Remove hands and the water should stop. If not, refer to the troubleshooting guide or call the factory.
8. Periodically clean the filter element located inside the **In-Line Filter (16)**.
9. For minor adjustments, refer to the instructions located inside the cover of the **Control Box (19)**.
10. **IMPORTANT:** The stop valve should never be opened to the point where the water flow exceeds the flow capability of the fixture. The fixture must be able to accommodate the continuous water flow from the faucet in the event of a failure. Should the fixture overflow due to water exceeding the capability of the fixture and/or the drain pipe, Hydrotek will not be responsible for any damages.



AC powered  
plug-in power  
adapter

Input: 120 VAC  
Output: 12 VDC

### Parts:

1. Flow Control Device	12. Compression Nut
2. Gooseneck Spout	13. Compression Ferrule
3. Spout Nut	14. Compression Fitting
4. Split Washer	15. Solenoid Valve
5. Body	16. In-Line Filter
6. Gasket	17. Nylon Washer
7. Supply Rod	18. Sensor Eye Cable
8. Washer	19. Control Box
9. Mounting Nut	20. Power Adapter
10. Compression Adapter	21. LED Sensor Cover
11. Supply Tube	

**HYDROTEK INTERNATIONAL, INC.**  
 5055 Forsyth Commerce Rd., Ste 124  
 Orlando, FL 32807  
 800.922.9883 (Phone)  
 866.670.5580 (Fax)  
[www.hydrotekintl.com](http://www.hydrotekintl.com)



# 6000C Series

## Sensor Operated Mixing Faucet

### Troubleshooting Guide

---

Normal Operation: When power is connected, the faucet will immediately perform diagnostic function. You will hear a clicking sound and see lights flash. When the user's hands are placed under the spout, the light will flash once and water will start to flow. Water flow will stop when hands are removed. The red indicator light will flash when the batteries are low.

Turn the manual handle clockwise to increase temperature and counter-clockwise to decrease.

Problem	Possible Cause	To Diagnose	Remedy
Faucet will not turn on:	Water not turned on	Check water supply	Turn water on
	Power supply failure	No light, no clicking: • Check batteries • Check power adapter	Reinstall or replace batteries/ Replace power adapter
	Low battery	Light continues to flash	Replace batteries
	Electronic PCB / Sensor is defective	No light, no clicking: • Reinsert batteries • Reattach power adapter	Replace electronic PCB
	Solenoid valve is clogged	Solenoid is clicking but no water is coming out	Clean solenoid
	In-line filter is clogged	Open clean-out trap and check filter screen	Clean or replace filter screen
	Solenoid coil is defective	Insert new batteries or reattach power adapter. Light blinks but no solenoid is clicking	Replace solenoid coil
	Flow control is clogged	Open flow control device and check	Celan the flow control device
Faucet will not shut off, has low glow, or drips:	The solenoid valve is normally closed. Turn off water and activate the faucet. If there is a clicking sound, the solenoid valve is dirty. If there is no clicking sound, then check the solenoid valve. If the faucet is dripping, clean the solenoid valve.		

**IMPORTANT:** Periodic maintenance is required for smooth and trouble-free operation of this faucet.

*For service and inquiry about available repair kits, please call Hydrotek Technical Support at (800) 922-9883.*

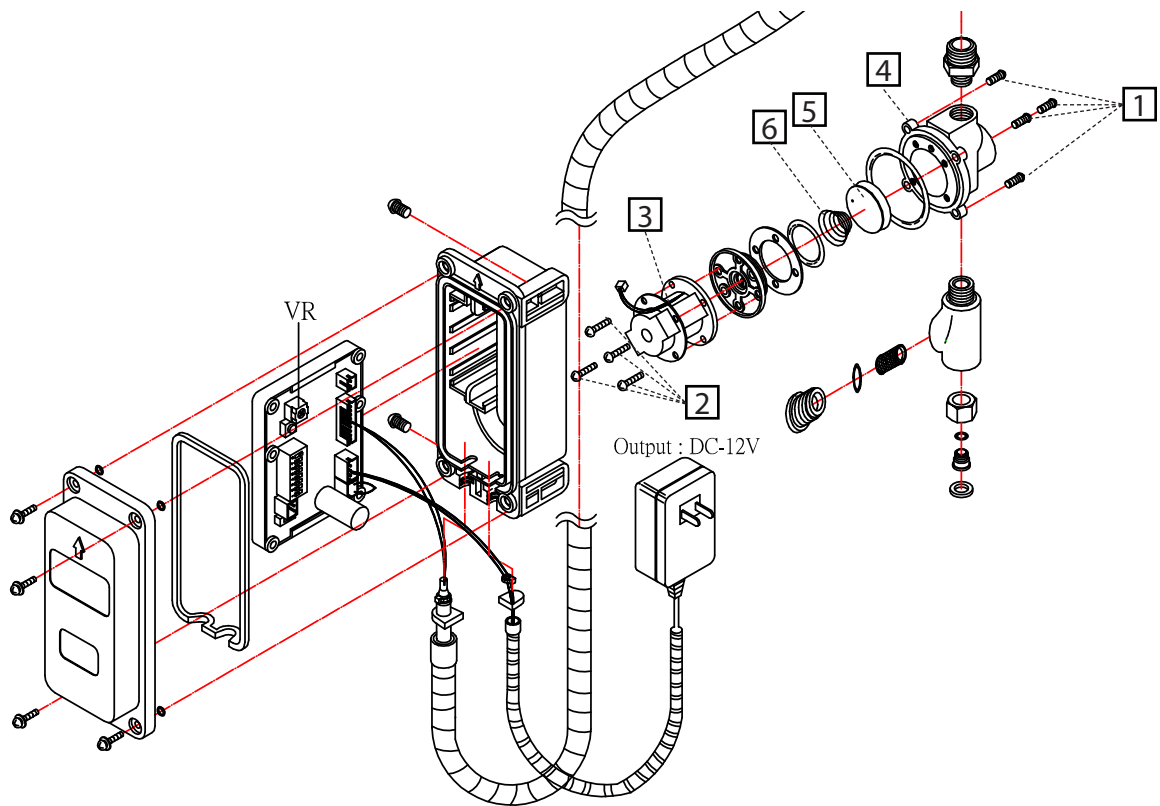
#### Care and Cleaning Instructions:

- **WARNING!** Using abrasive or chemical cleaners **will** damage the chrome or decorative finishes.
- Use only soap and water to clean the finish, then wipe dry with a clean cloth.
- If chemical cleaners are used for other parts of the lavatory, ensure that the faucet is protected from potential contact from those cleaners.

# 6000C Series

## Sensor Operated Mixing Faucet

### Solenoid Valve Cleaning



1. Turn off water supply at stop valve.
2. Remove control box (if possible) to gain access to the solenoid valve.
3. Remove four Screws (#1) and separate the valve from the box.
4. Remove four Coil Screws (#2) and separate Coil (#3) from Valve Seat (#4).
5. Clean or replace Control Disc (#5), Disc Spring (#6), Piston, Piston Spring, and check the Piston Sleeve for corrosion.
6. Re-install all parts in same order as the diagram below.
7. Re-install solenoid on the control box and re-mount box in water line.

8. Check and clean Filter Screen (#24) in Filter Body (#22).
9. Reset P.C. Board and make sure solenoid clicks open and thumps closed.
10. Turn on water and check for leaks and proper operation.

*(For further questions, please call Hydrotek Tech Support at 1-800-922-9883 ext. 103)*

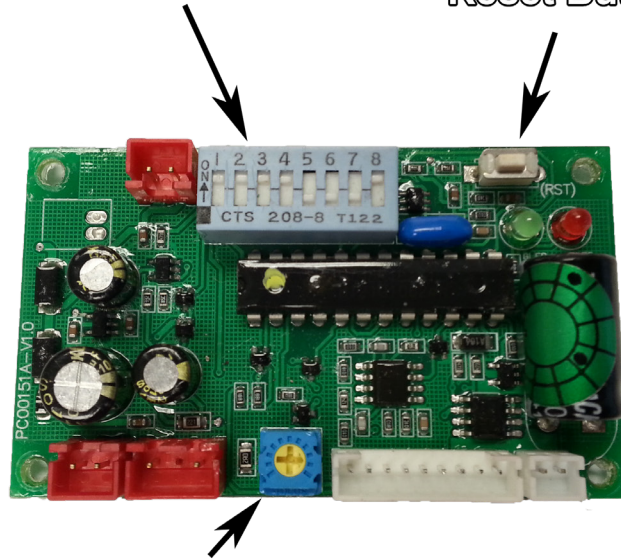
# 6000C Series

## Sensor Operated Mixing Faucet

### Control Module Settings

Settings Control Dipswitches

Reset Button



Sensor Length Adjuster

#### Shut Off Time Delay (After hands are removed)

Sw1	Sw2	Sw3	Delay
On	On	On	1 Sec
On	On	Off	2 Sec
On	Off	On	3 Sec
On	Off	Off	4 Sec
Off	On	On	5 Sec
Off	On	Off	6 Sec
Off	Off	On	7 Sec
Off	Off	Off	8 Sec

Factory Preset

■ = Switch Position

1	2	3	4	5	6	7	8
■	■	■	■	■	■	■	■

#### Sensor Distance

Sw6	Mode	Distance
On	Std	4" - 12"
Off	Enhanced	10" - 12"

To increase distance, turn adjuster CLOCKWISE

To decrease distance, turn adjuster COUNTER-CLOCKWISE

#### Automatic Time Off (maximum run time after activation)

Sw4	Sw5	Time Off
On	On	OFF
On	Off	15 Sec
Off	On	30 Sec
Off	Off	60 Sec

#### Faucet Switch - DO NOT TOUCH

Sw7	Sw8	Mode
On	Off	Auto Faucet

**IMPORTANT: Always push the Reset Button after any adjustments**