



Sensor Faucets and Flush Valves

8CRFKC Series Concealed Retrofit Flush Valve

Description

Sensor operated, water conserving, concealed closet flush valve for floor mounted or wall hung bowls. Fits existing Sloan or Zurn installations.

Specifications

Concealed, Piston Operated, Closet Flush Valve with the following features:

- Standard Brass All Metal Construction
- Superior, Slow-Closing, Piston Flushing Mechanism
- Standard Manual –Mechanical and Electrical Override Buttons
- Field Adjustable to Left or Right Rough-In
- Operating Pressures: 10-125 PSI
- Standard Self-Cleaning Filtering System
- Superior VSI Silicone Elastomer Piston Seals are Unaffected by Chlorine, Chloramines, and Ammonia
- ADA Compliant—Infrared Sensor Operated for “No Hands” operation
- Reliable, Latching Solenoid Valve
- Preset / Adjustable Sensor Distance
- High Copper, Low Zinc Brass Casting for Dezincification Resistance
- 36-hour Sentinel Flush
- Vacuum Breaker Included
- Fits the standard 4 x 4 inch 2 -gang electrical box (not included)
- (4) AA Alkaline Batteries—Furnished

Electrical Options

- AC Powered (H)
- Battery Powered (HB)

Flow Rate Options

Closet

- 1.6 GPF (-C)
- 1.6/1.1 GPF Dual Flush (-16DF)
- 1.28 GPF (-128)
- 1.28/1.1 GPF Dual Flush (-128DF)

Urinal

- 1.0 GPF (-U)
- 0.5 GPF (-05)
- 0.25 GPF (-025)
- 0.125 GPF (0125)

* Flush valves may not function with all bowls. Be sure to verify flow requirements with bowl manufacturer.

* Flow rate is field adjustable



Compliances & Certifications



- ADA Compliant
- ASSE 1037/ASME A112.1037/CSA B125.37-2015
- IPC, IRC, and UPC Compliant

Part Number Constructed as Follows:

(Electrical Option)8CRFKC-(Flow Rate Option)

Example:

AC powered, 1.6 GPF concealed retrofit flush valve:

H8CRFKC-C

The information contained within this document subject to change without notice

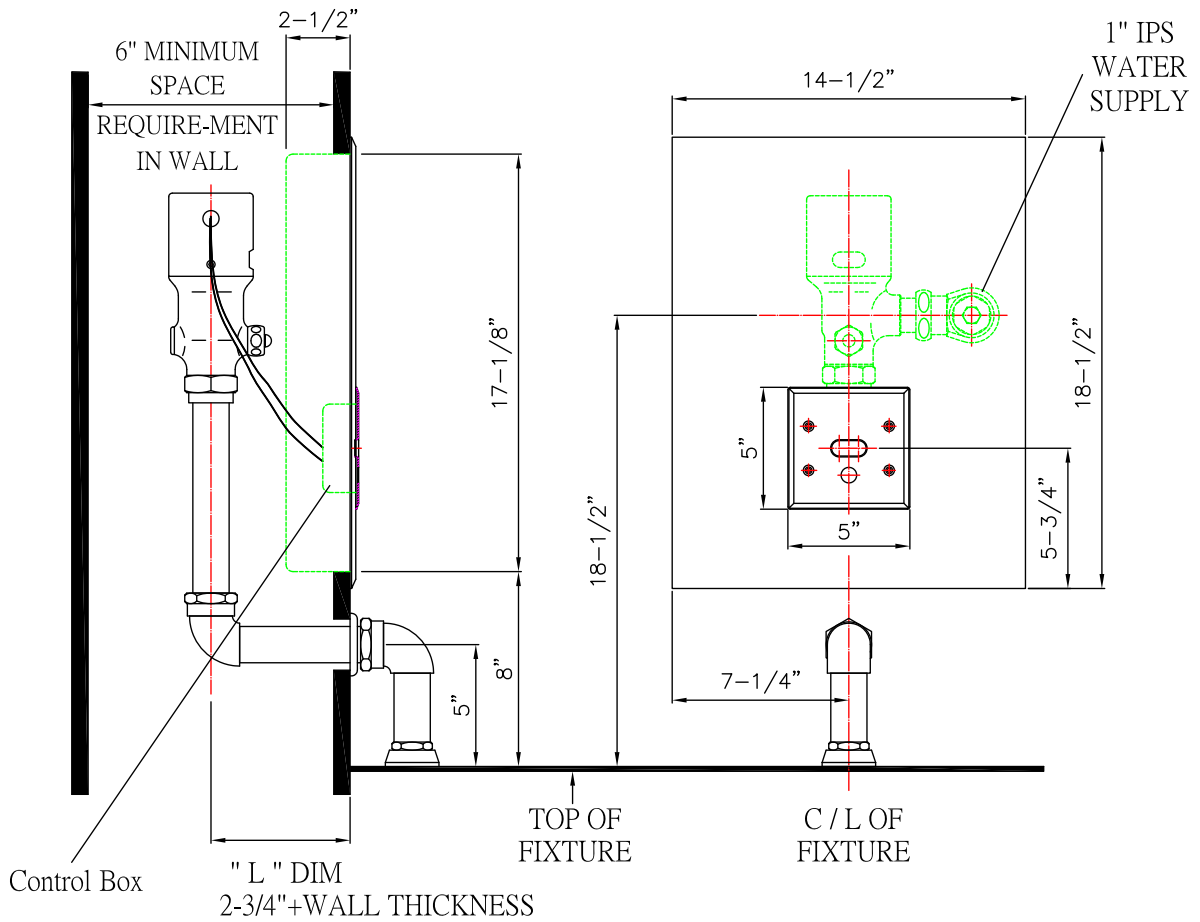
5055 Forsyth Commerce Rd Ste 124, Orlando, FL 32807
Phone: 800.922.9883 | Fax: 866.670.5580 | hydrotekintl.com



Sensor Faucets and Flush Valves

8CRFKC Series Concealed Retrofit Flush Valve

Rough-in Dimensions



FIXTURE CONNECTIONS **NOT** INCLUDED

The information contained within this document subject to change without notice

5055 Forsyth Commerce Rd Ste 124, Orlando, FL 32807
Phone: 800.922.9883 | Fax: 866.670.5580 | hydrotekintl.com