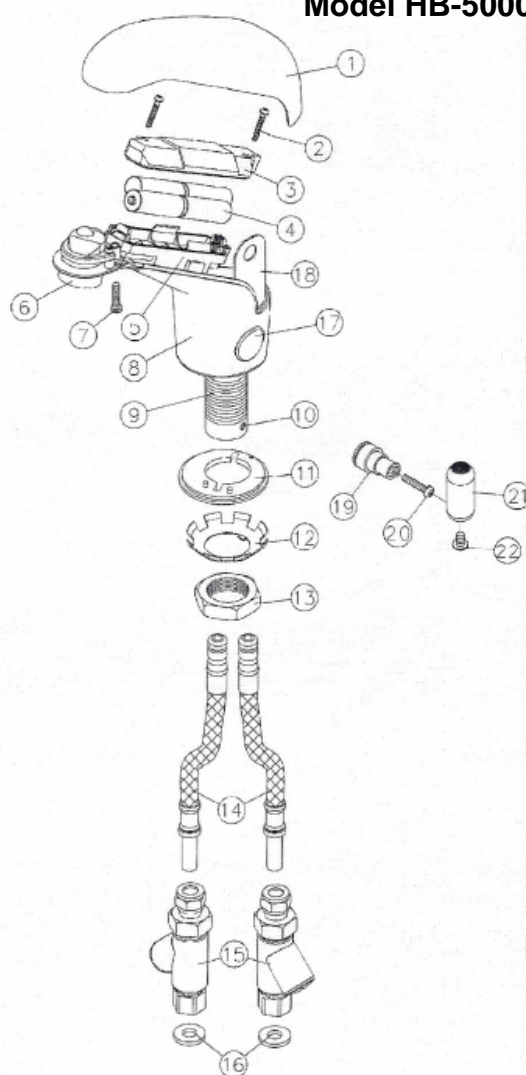


# INSTALLATION INSTRUCTIONS

## Hydrotek Non-Mixing Automatic Faucet w/ Manual Control (Battery Powered)

**Model HB-5000EM**

1. Prior to installing this faucet, thoroughly flush all water lines and replace stop washers, if necessary.
2. To ensure proper operation, " DRY TEST " the faucet before installing. Loosen the Cover Screw (7) and remove the Top Cover (1). Loosen the Battery Holder Screws (2) and remove the Battery Holder Cover (3). Properly insert batteries into the Battery Holder (5) and reinstall Battery Holder Cover. The faucet should immediately perform a self-adjusting/diagnostic function. If you see the indicator light flash and hear a clicking sound, proceed to the next step. If there is no flash of light or clicking sound, recheck batteries for correct positioning.
3. Remove the Battery Holder Cover (3) again and take out batteries.
4. Rotate the Supply Tube Locking Screw (10) fully clockwise. Insert both ends of the Supply Tube (14) (with O-rings) fully into the bottom of the Mounting Rod (9) by twisting and pushing until properly seated. Rotate Supply Tube Locking Screw (10) counter-clockwise until the red indicator marking on the Locking Screw is at its closest position to the red indicator marking on the Mounting Rod. This is necessary to ensure that the Supply Tubes have been properly locked into the Mounting Rod.
5. Install In-Line Filters (15) onto stop valves using Nylon Washers (16).
6. Unscrew the Mounting Nut (13) from the Mounting Rod (9) and completely remove both the Mounting Nut (13) and the Star Locking Washer (12).
7. From above the deck, carefully feed the faucet's Supply Tubes (14), and Mounting Rod (9) into the deck mounting hole and seat the faucet in the correct mounting location.
8. From below the deck, feed the Supply Tubes (14) through the keyed Star Locking Washer (12) and Mounting Nut (13). Slide the Locking Washer and Mounting Nut up onto the Mounting Rod (9) and tighten Mounting Nut on the Mounting Rod to securely lock faucet to the deck.
9. Connect the Supply Tubes (14) to the In-Line Filter compression fittings (15) and securely tighten.
10. Reinstall batteries and secure Battery Holder Cover (3) with the Battery Holder Screws (2).
11. Reinstall Top Cover (1) and secure it to the faucet body using the Cover Screw (7).
12. Turn water on and check for leaks. Place your hands under the faucet spout to activate water flow. Remove hands and water should stop.
13. To adjust the temperature in internal adjustment mode, open the faucet body's Top Cover (1) and remove the Lock for V.R. Access Cover (18) and the V.R. Access Cover (17) from the faucet body. Temperature Adjustment slotted shaft will now be exposed in the body opening. With a flat-bladed screwdriver, rotate the shaft clockwise for cooler temperature, or counter-clockwise for warmer water temperature. Replace the Access Cover and Access Cover Lock when done.
14. To install the faucet's external adjustor handle, open the faucet body Top Cover (1) and remove the Lock for V.R. Access Cover (18) and the V.R. Access Cover (17) from the faucet body. The Temperature Adjustment Shaft will now be exposed in the body opening.
15. Install the Mix Shaft Extender (19) on the Temperature Adjustment Shaft and secure with the Screw (20).
16. Attach Adjustor Handle (21) to the Shaft Extender (19) with the Screw (22).
17. To externally adjust the temperature, rotate the Adjustor Handle clockwise for cooler temperature, or counter-clockwise for warmer water temperature.
18. To manually turn on water flow, pull Adjustor Handle (20) out, from the faucet body. To shut off water flow manually, push handle in, toward the faucet body.



Part Number Descriptions		
1.	Top cover	12. Star locking washer
2.	Battery holder screws (2)	13. Mounting nut
3.	Battery holder cover	14. Supply tube (2)
4.	AA Alkaline batteries (4)	15. In-line filter (2)
5.	Battery holder	16. Nylon washer (2)
6.	Aerator	17. V.R. access cover
7.	V.R. Screw for top cover	18. Lock for V.R. access cover
8.	Faucet body	19. Mix shaft extender
9.	Mounting rod	20. Screw for mix shaft extender
10.	Locking screw for supply tube	21. Adjustor handle
11.	Rubber gasket	22. Screw for adjustor handle

**HYDROTEK INTERNATIONAL, INC.**  
5055 Forsyth Commerce Rd. , Ste. 124  
Orlando, FL 32807  
1.800.922.9883 (Phone)  
1.866.670.5580 (Fax)  
[www.hydrotekintl.com](http://www.hydrotekintl.com)