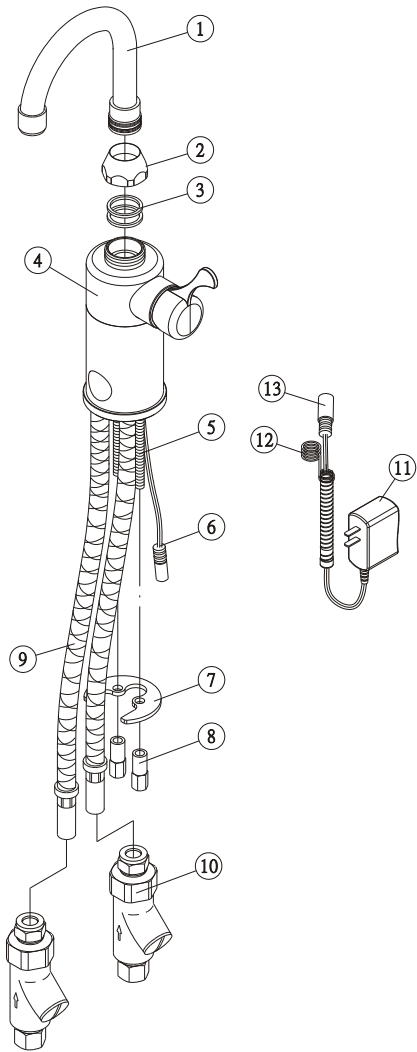


# HYDROTEK INSTALLATION INSTRUCTIONS

## H-4100CLR Mixing Automatic Faucet (AC Powered)

### Parts Table

No.	Description	No.	Description
1.	Gooseneck Spout	10.	Filter / Check Valve (2)
2.	Spout Nut	11.	Power Adaptor
3.	Split Washers (2)	12.	Nut
4.	Body	13.	Power Adaptor Connector
5.	Mounting Bolt		
6.	Control Cable		
7.	Mounting Washer		
8.	Mounting Nut		
9.	Supply Tube (2)		



### Installation Instructions

1. Prior to installing this faucet, thoroughly flush all water lines.
2. **USE TEFLON TAPE, NOT PIPE DOPE FOR ALL CONNECTIONS.**
3. Attach the hot and cold water Supply Tubes (9) by screwing threaded ends into bottom of Faucet body (4).
4. Position faucet by lowering flexible Supply Tubes (9) and Control Cable (6) through deck hole. Secure faucet to sink deck using Mounting Washers (7) and Mounting Nuts (8).
5. Attach Inline Filter/Check Valves (10) to stop valves using Nylon Washers inserted into filter inlet. Attach Supply Tubes (9) to Filter/Check Valve Compression Fittings. Left supply tube "HOT". Right supply tube "COLD". Filters may be cleaned by using a screwdriver to open the cleanout trap and remove the screen.
6. Mount Gooseneck Spout (1) onto faucet using Spout Nut (2) and Split Washers (3).
7. Plug Control Cable (15) with Power Adaptor Connector (13).

**8.IMPORTANT: FIRST**, plug power adaptor (11) into 120V AC outlet and **THEN** turn on water. Place your hand in front of faucet sensor eye to activate water flow. Adjust water temperature using control handle on right side of faucet. Remove hand and flow should stop. If not, refer to Troubleshooting Guide.

**9.IMPORTANT:** The stop valve should never be opened to the point where the water flow exceeds the flow capability of the fixture. The fixture must always be able to accommodate the continuous water flow from the valve in the event of a valve failure. Should the fixture overflow happen due to water exceeding the capability of the fixture & or the drain pipe, Hydrotek will not be responsible for any flood damages.

**10.IMPORTANT:** This product contains mechanical and/or electrical components that are subject to normal wear. These components should be checked regularly (1 year is recommended) and replaced as needed to maintain the Faucets performance. Call 800-922-9883 for further details.

**11.IMPORTANT:** DO NOT use abrasives, acids or cleaning fluids to clean the Hydrotek Faucet as they may dull the luster and attack the chrome or special finishes. Use only soap and water then wipe with a clean cloth or towel.

### TROUBLESHOOTING

PROBLEM	POSSIBLE CAUSE	TO DIAGNOSE	REMEDY
Faucet Will Not Turn On	Water not on	Check water supply.	Turn on water supply
	Power failure.	No light, no click: Check power adaptor.	Replace power adaptor.
	PCB/Sensor Is defective.	No light, no click : Re-attach power adaptor.	Replace electronic PCB.
	Solenoid Valve Is clogged.	Solenoid is clicking but No water.	Clean solenoid.
	In-line Filter is Clogged.	Open clean-out trap and check filter.	Clean or replace Filter.
	Solenoid Coil is Defective.	Re-attach power adaptor, Light blinks, but no clicking.	Replace solenoid coil.
Faucet Will Not Shut Off, Low Flow Drips.	Flow Control is Clogged.	Open flow control device And check.	Clean the flow control device.
	Solenoid valve is normally closed. Turn off water and activate the faucet, if there is a clicking sound, then the solenoid is dirty. If there is no clicking sound, then check solenoid valve. If faucet has a low flow or is dripping, clean solenoid valve. For mixing models, If faucet continues to run, check the manual adjusting handle to see if it is in on position.		



Hydrotek International, Inc.  
1.800.922.9883 (Phone)  
1.866.670.5580 (Fax)  
www.hydrotekintl.com